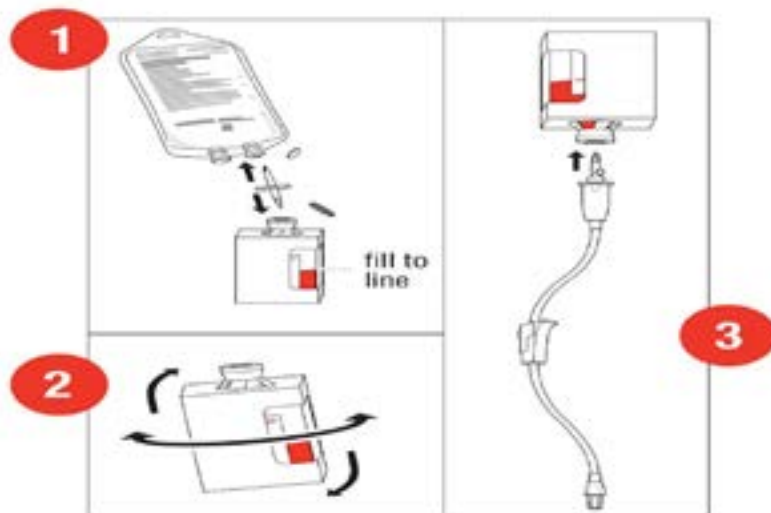
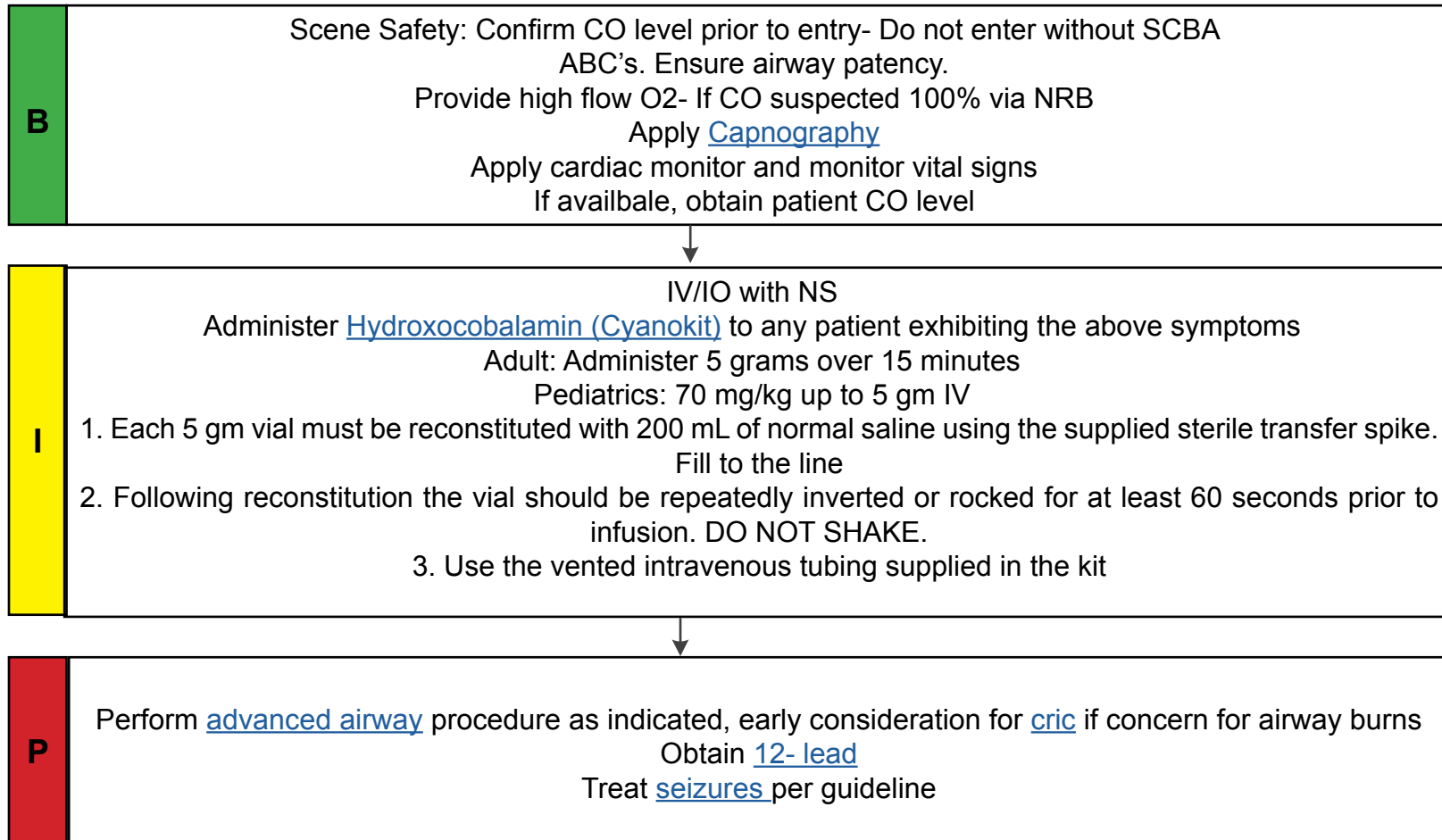


# Cyanide Poisoning

## Designation of Condition:

**Cyanides** are present in the products of combustion of many natural and synthetic materials, it is a cellular asphyxiant. Cyanide toxicity should be suspected in victims of smoke inhalation or pulled from a structure fire exhibiting concerning signs and symptoms. There are also many industrial uses of cyanide from which exposure may occur, including removal of gold from ore, photography development, electroplating, and cleaning of various industrial metals. Symptoms include: Headache, weakness, nausea, vomiting and confusion. Signs of significant toxicity include: Tachypnea, hypotension, cyanosis, agitation, seizure, and coma. These may progress to cardio-pulmonary arrest if not treated.



### Quick Reference Peds Dosing:

**1 bottle= 5 gm**  
**0-2 years- 1/8 bottle**  
**3-5 years- 1/4 bottle**  
**6-13 years- 1/2 bottle**