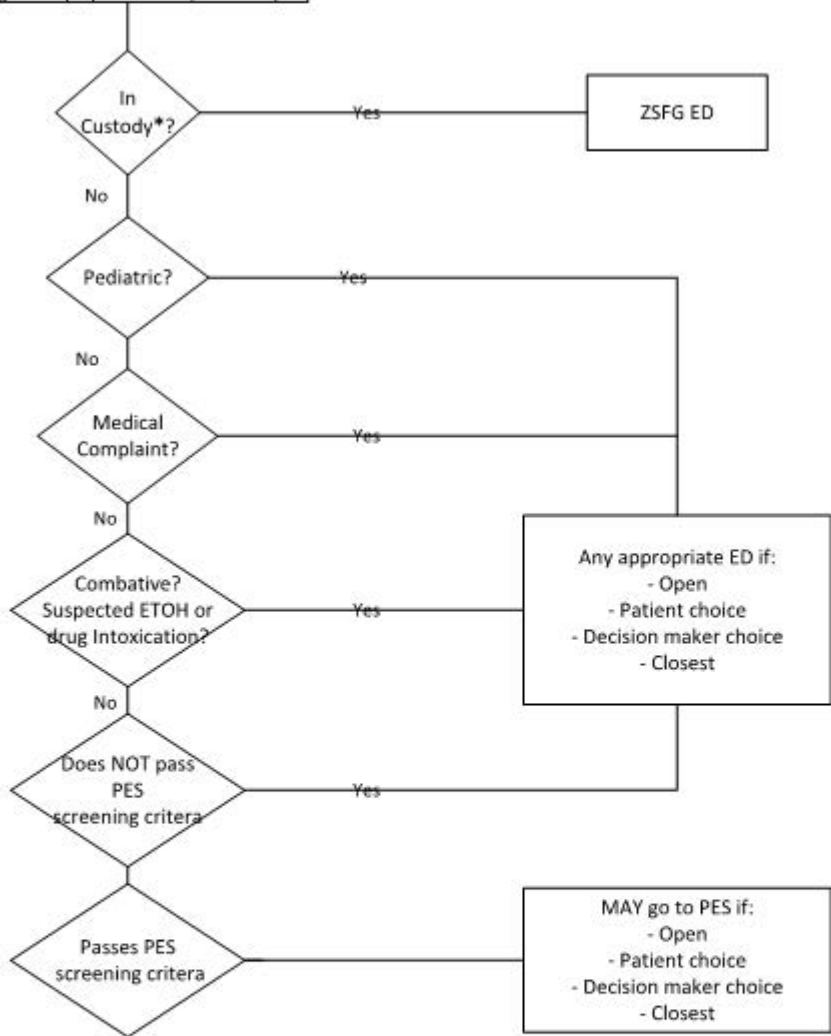


**START HERE**  
 Psychiatric Patient  
 (Signs & Symptoms and / or 5150)



\*Law enforcement custody defined as "under arrest, detained, or incarcerated."

**PES SCREENING CRITERIA:**

- Age 18 - 65 years
- GCS > 13
- Pulse 55 - 120
- SBP 90 - 190; DPB 60 - 110
- Resp rate 12 - 24
- Blood glucose 60 - 250
- Temp 97-100.5F (35-38C)
- O2 Sat > 94%
- No active bleeding
- No bruising or hematoma above clavicles
- No active seizure
- No untreated lacerations