

# **South-East Field Care Clinic**



**Location: 2401 Keith Street**

**Operational Date/Time: April 10<sup>th</sup> at 0800**

**Purpose:**

- To relieve overload at the hospitals of triage and care of low acuity (code 2) patients.
- Triage, referral & release, treat & release, transport of unhoused PUI, transport to hospitals if needed.
- Not a COVID testing/screening site.
- Not a morgue .

**Operational Period:**

- Estimated capacity is 250 patients per day, 24 patients per hour, maximum time in care site is 6-8 hours.
- 24/7 for an estimated 2 weeks.

**Eligible patients / Field Patient Triage:**

- A. Patients meeting the following criteria are medically appropriate for Alternative Destinations:
  - a. Pulse rate = 55 – 120
  - b. Respiratory rate = 12 – 24
  - c. Oxygen saturation = 94% or greater with or without intervention
- B. Patients meeting the following criteria are excluded from Alternative Destinations:
  - a. Patients requiring specialty care (e.g. burns, obstetrics, trauma, etc.).
  - b. Patients meeting Adult or Pediatric Critical Medical destination criteria.
  - c. Patients under chemical sedation, physical restraint and/or 5150 hold.
  - d. Uncontrolled bleeding
  - e. Active seizures
  - f. Obvious infestation

**Notification:**

Receiving Hospital notification procedures will be employed when contacting South-East Clinic.

All SFFD, King American, and AMR radios are now programmed with a “Call-In” channel to notify Alternate Care Sites of transport to their facility.

The “ACS-CALL” channel is located in both the MEDIC and BART/MED Zones on Channel 12. The channel is programmed with a paging list that will ONLY call the Alternate Care Sites. The paging list includes both a primary and back up for all 4 sites (3 planned and one extra). All primary radios are listed first, followed by all back up radios. (Back up radios will be used only in failure of the primary radio)

To page the site:

- Set the channel to MEDIC or BART/MED Zone Channel 12
- Press and hold the page button
- Scroll through the list to find and highlight the location “primary” contact
- Squeeze the transmit button on the Mic or the Radio and listen for the acknowledgement tones from the radio
- When call is answered by receiving site, transmit information normally

The paging list is populated as follows:

ELLA HILL PR  
MAXINE HALL PR  
SE PRIMARY (SOUTH EAST)  
ACS4 PRIMARY  
ELLA HILL BU  
MAXINE HALL BU  
SE BACKUP  
ACS4 BACKUP

(PR=Primary, BU=Back Up)

#### **Ambulance Access:**

From Northbound or Southbound Third Street

- East on Carroll Ave
- Turn Left (North) on Keith Street
- Stop on Keith south of main entrance of the Southeast Health Center (signs will be posted)

#### **Patient Triage:**

Triage will take place in the ambulance. The Triage Nurse will come out and meet the ambulance at the curb.

Patients will be triaged into one of two categories; Respiratory and Non-Respiratory.

Non-Respiratory patients will be taken into the clinic building by the ambulance crew. The crew will be directed to a bed, where patient will be offloaded and report will be given. Patient Care Reports will be completed in the ambulance.

Respiratory patients will be directed to the tent area on Armstrong Street. Ambulances will proceed Northbound on Keith and then turn East (Right) on Armstrong, and stop at the tent

entrance (gap in the barricade). The patient will be taken into the tent by the ambulance crew. The crew will be directed to a bed where patient will be offloaded and report will be given. Patient Care Reports will be completed in the ambulance.

---

**Emergency Medical Response:**

In the event of an 9-1-1 dispatch to the Southeast ACS, responding units will access the site from East-or-Westbound Carroll and then Northbound on Keith. Crews will be met by the Triage Nurse and directed to the patient. If at anytime the facility is unable to accept ambulances, the triage nurse or appropriate staff should place the facility on diversion via ReddiNet.

**Ambulance / Fire Access:**

From North-or-Southbound Third Street:  
Eastbound on Carroll Ave  
Northbound (Right) on Keith Street  
Stop at the TRIAGE sign.

**Emergency Crew Entrance:**

Crews will be directed to the main clinic building on Keith Street or the Tent Area on Armstrong Ave (between Keith and Jennings Streets).

**Ambulance Egress:**

Northbound Keith Street to Westbound Armstrong Avenue

---

**PUI/COVID(+) Transfer:**

If a COVID(+) patient or a PUI, need to be transferred, staff should call the Non-Emergency Dispatch at 30 Van Ness. The number is 415-.487-5046.

**Non-Emergency Ambulance/PUI Bus Access:**

From North-or-Southbound Third Street:  
Eastbound on Carroll Ave  
Northbound (Right) on Keith Street  
Stop at the TRIAGE sign.

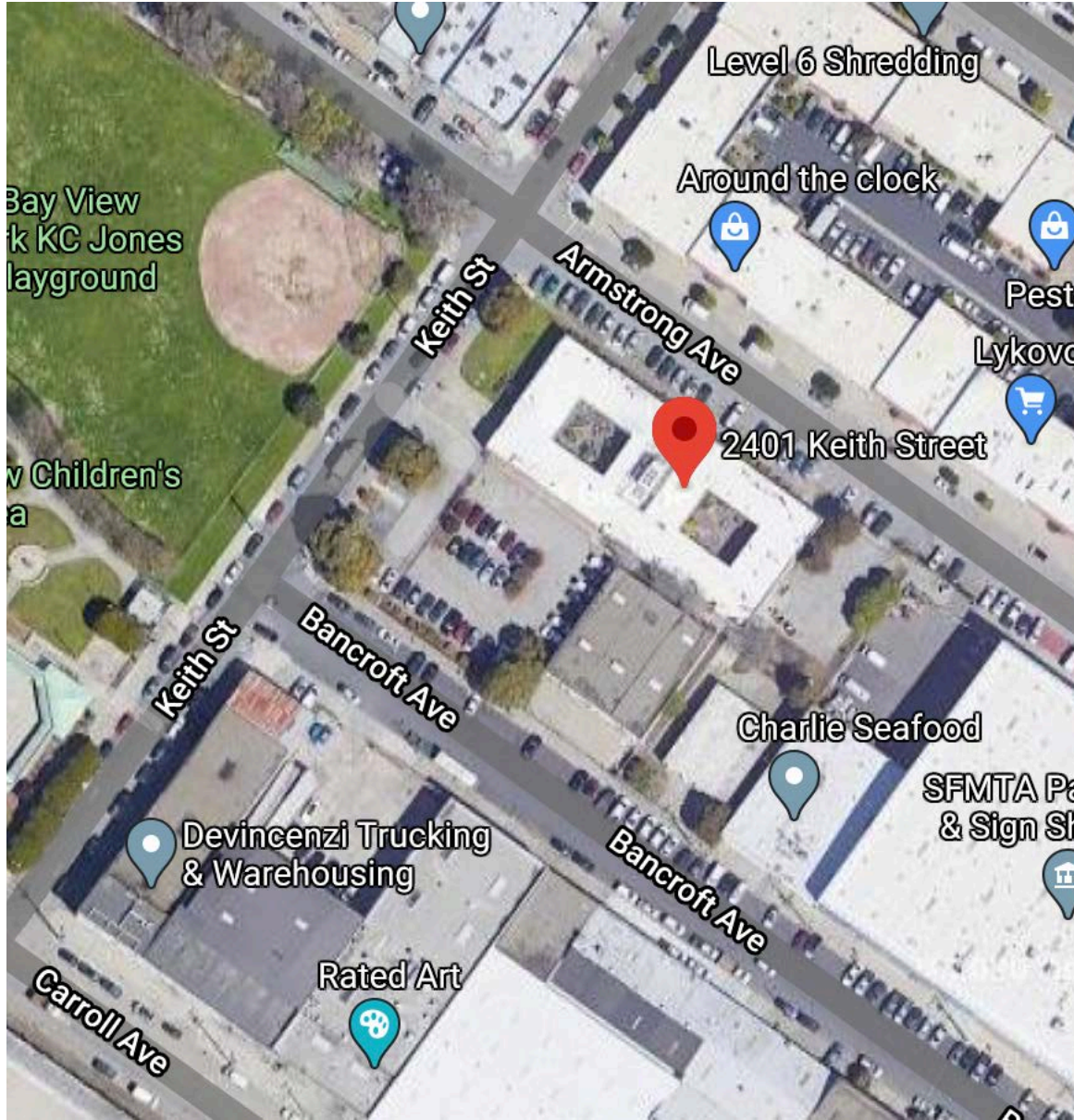
**Non-Emergency Ambulance/PUI Bus Entrance:**

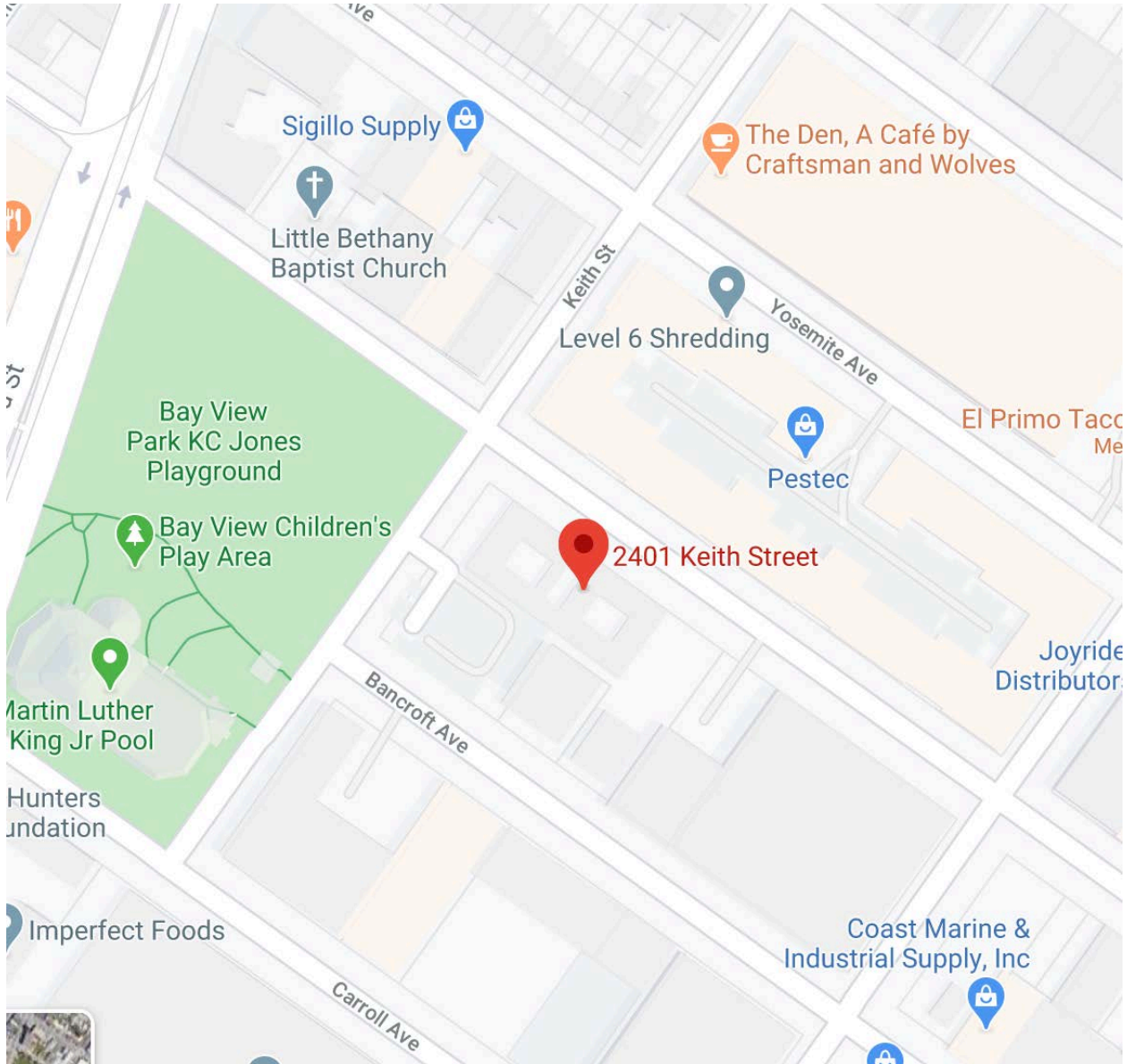
Crews will enter either the main clinic entrance on Keith Street or the respiratory entrance on Armstrong Ave (between Keith and Jennings Streets) as directed.

**Non-Emergency Ambulance/PUI Bus:**

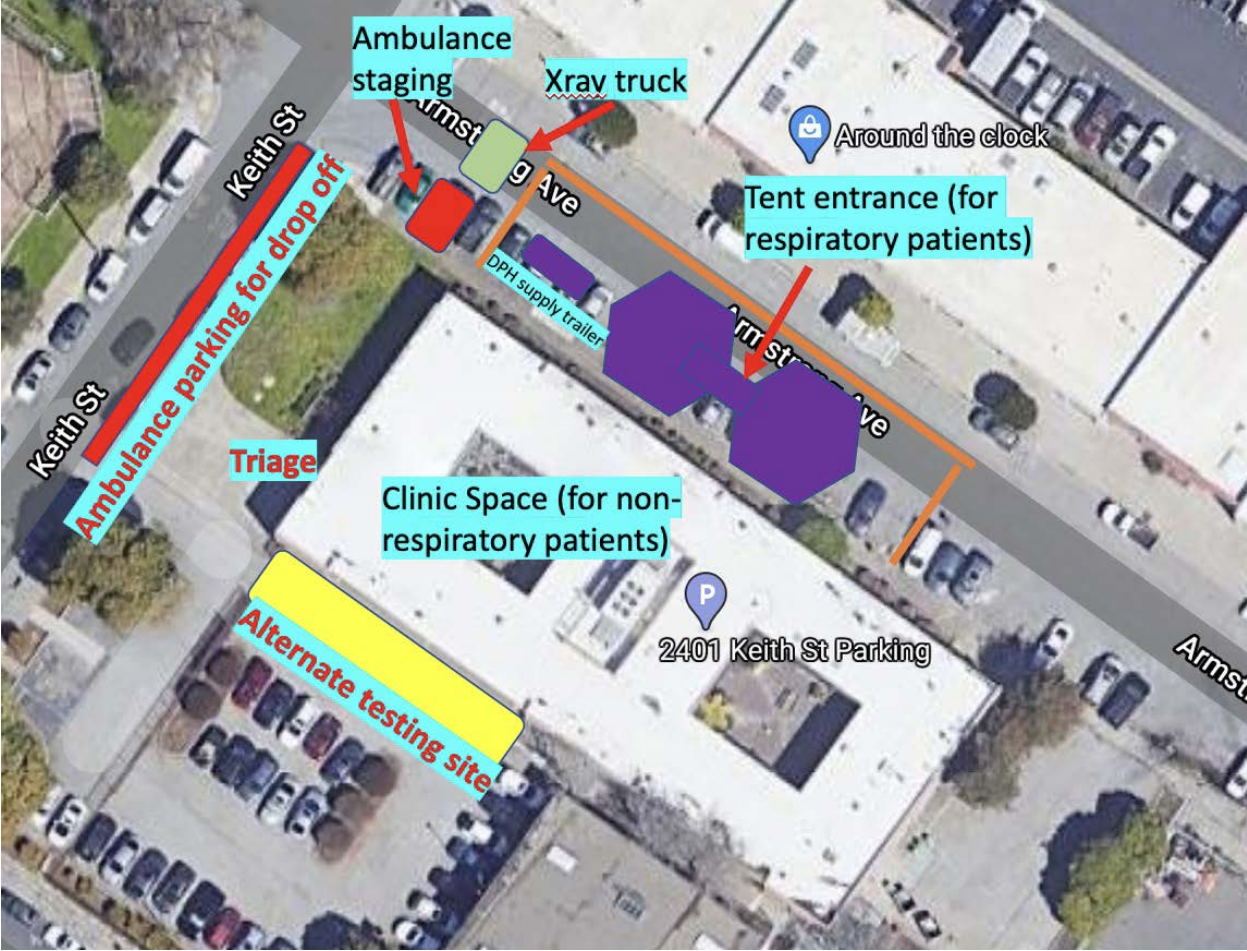
Northbound Keith Street to Westbound Armstrong Avenue

# Area Maps









Ambulance staging

Xray truck

Around the clock

Tent entrance (for respiratory patients)

Triage

Clinic Space (for non-respiratory patients)

Alternate testing site

2401 Keith St Parking

Keith St  
Ambulance parking for drop off

Armstrong Ave  
DPH supply trailer

Armstrong Ave

Armstrong Ave