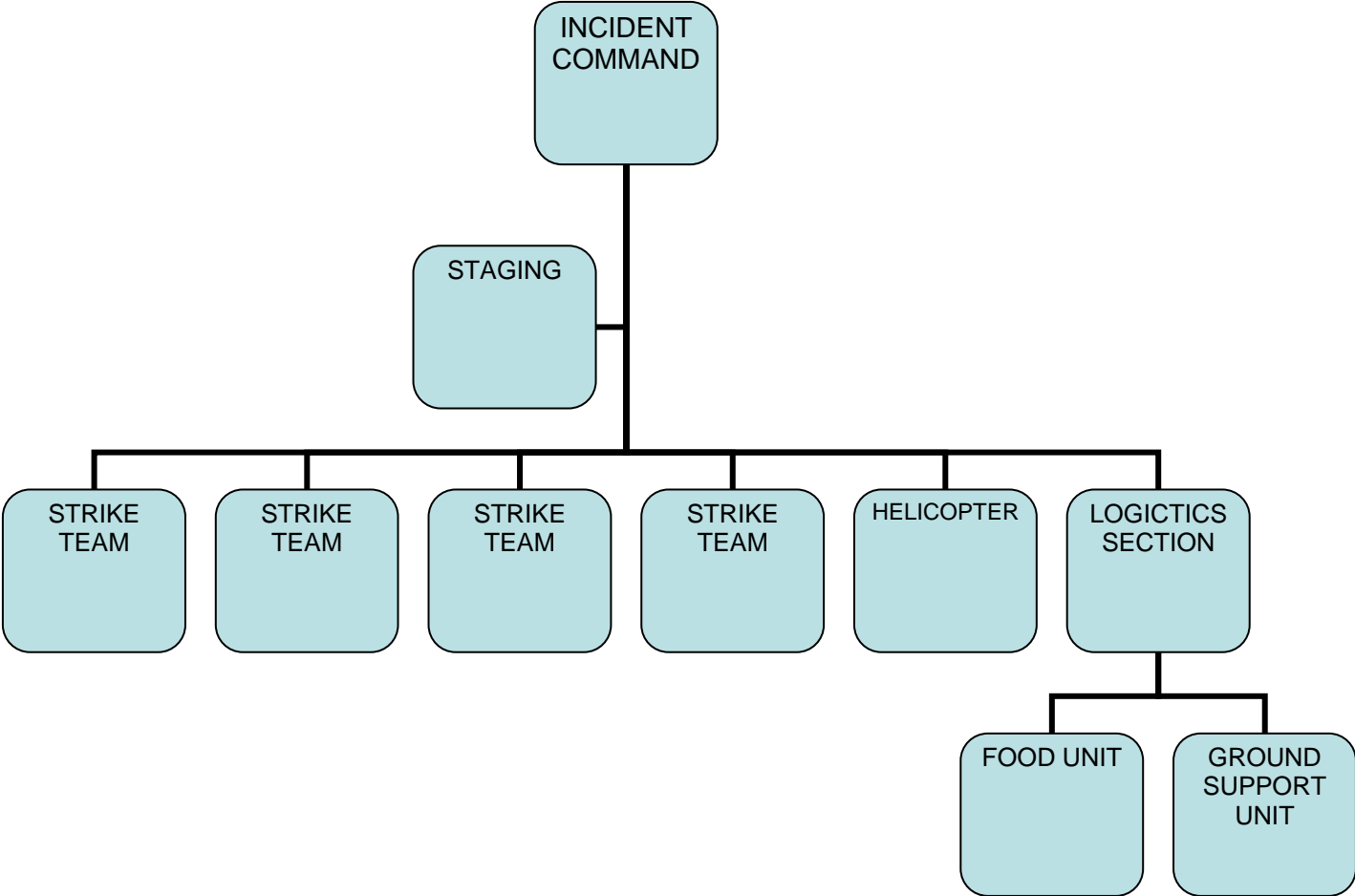


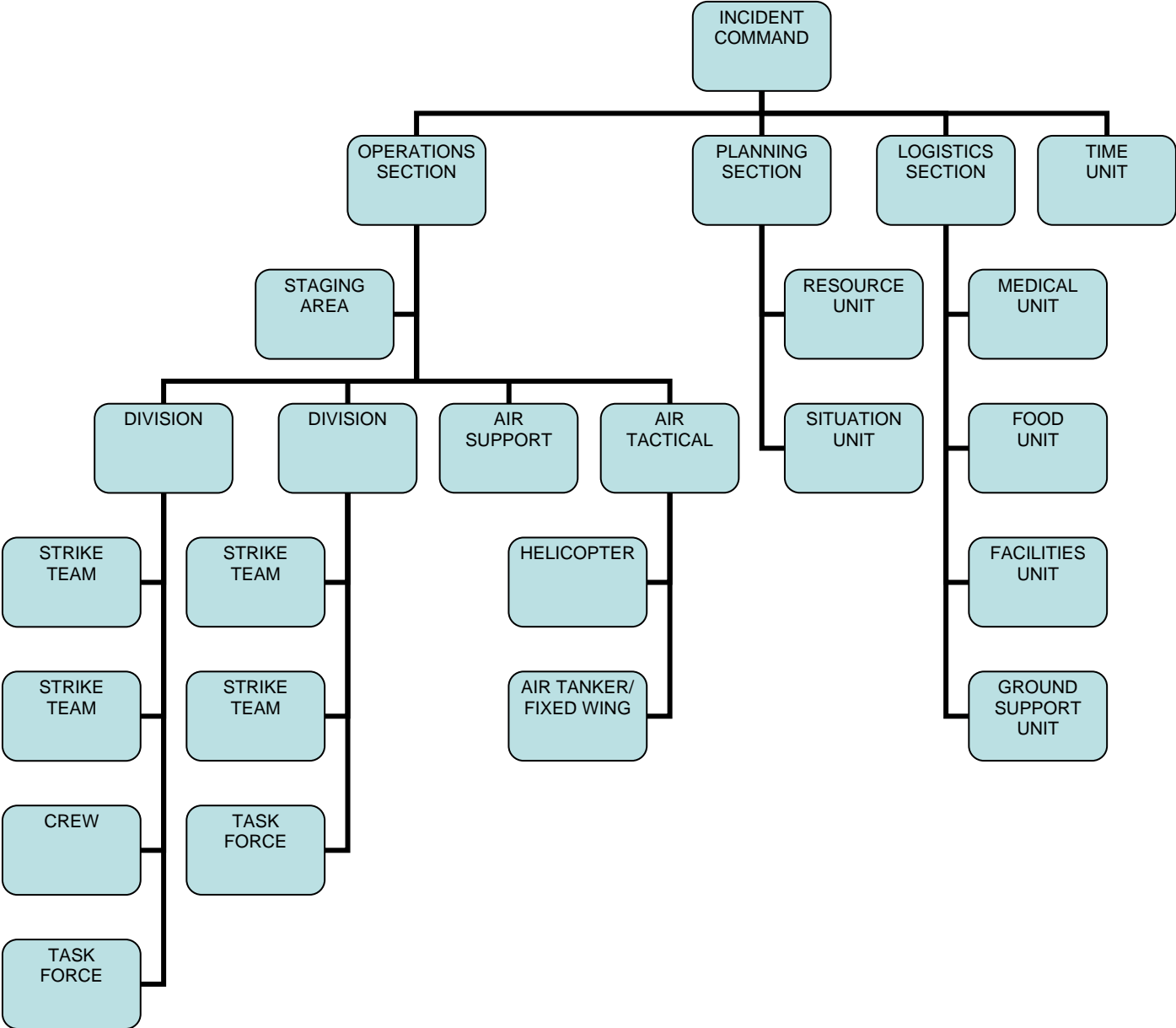
**Example #1: Initial Response Organization**

Initial response resources are managed by the initial incident commander who will perform all command and general staff functions.



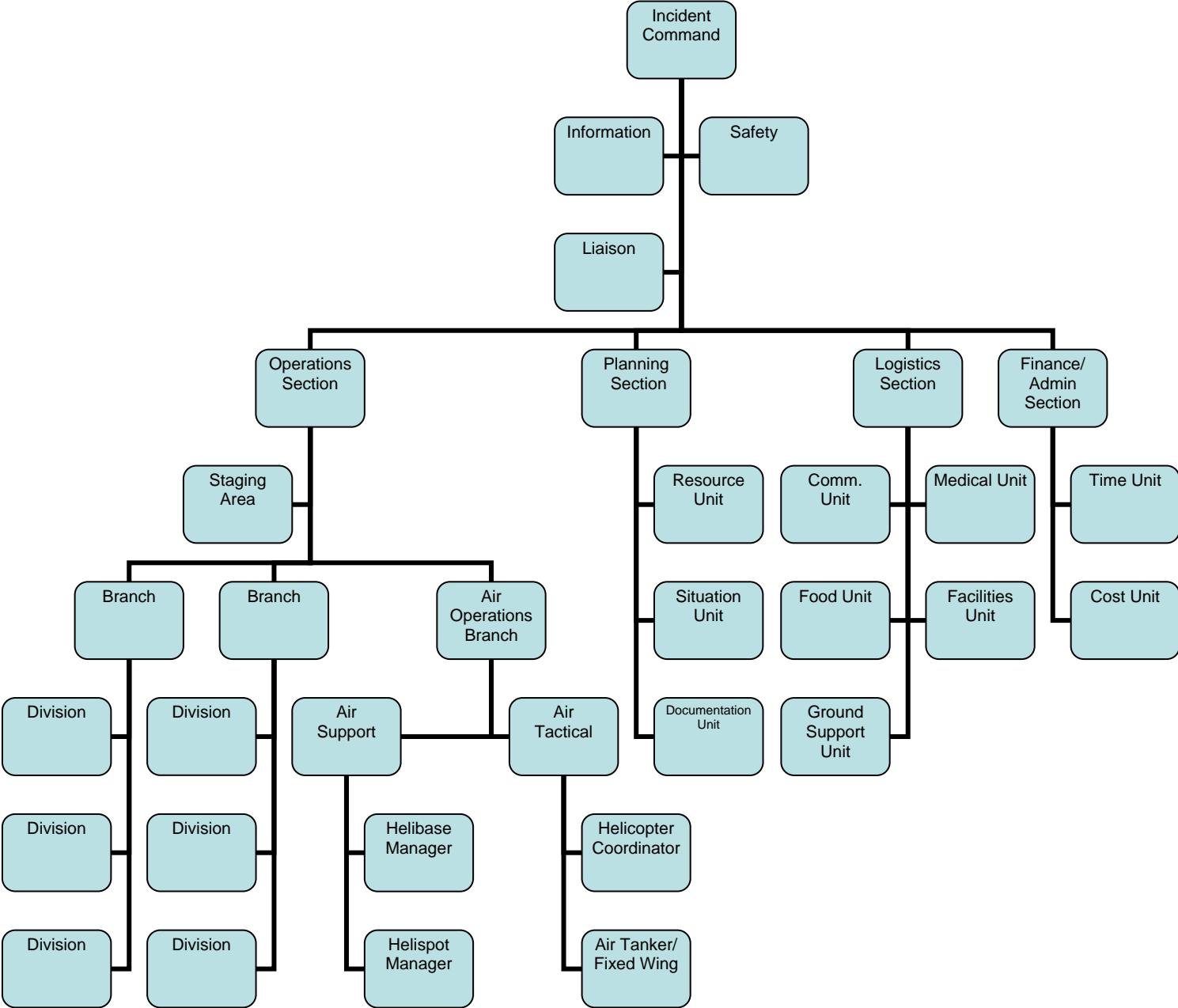
**Example #2: REINFORCED RESPONSE ORGANIZATION**

In the extended/reinforced response situation the Incident Commander continues to directly manage all resources. The IC has now designated a Staging Area, and Logistics Section Chief and two units within the section



**EXAMPLE #3: MULTI-DIVISION ORGANIZATION**

The Incident Commander has filled several Command and General Staff positions. Some Units in the Planning and Logistics Sections have been established. The Operations Section has established two Divisions and Air Tactical Group Supervisor positions.



**EXAMPLE #4: MULTI-BRANCH ORGANIZATION**

All Command and General Staff positions have been filled as well as many of the Units. The Operations Section has now established a two-Branch organization and an Air Operations Branch organization.