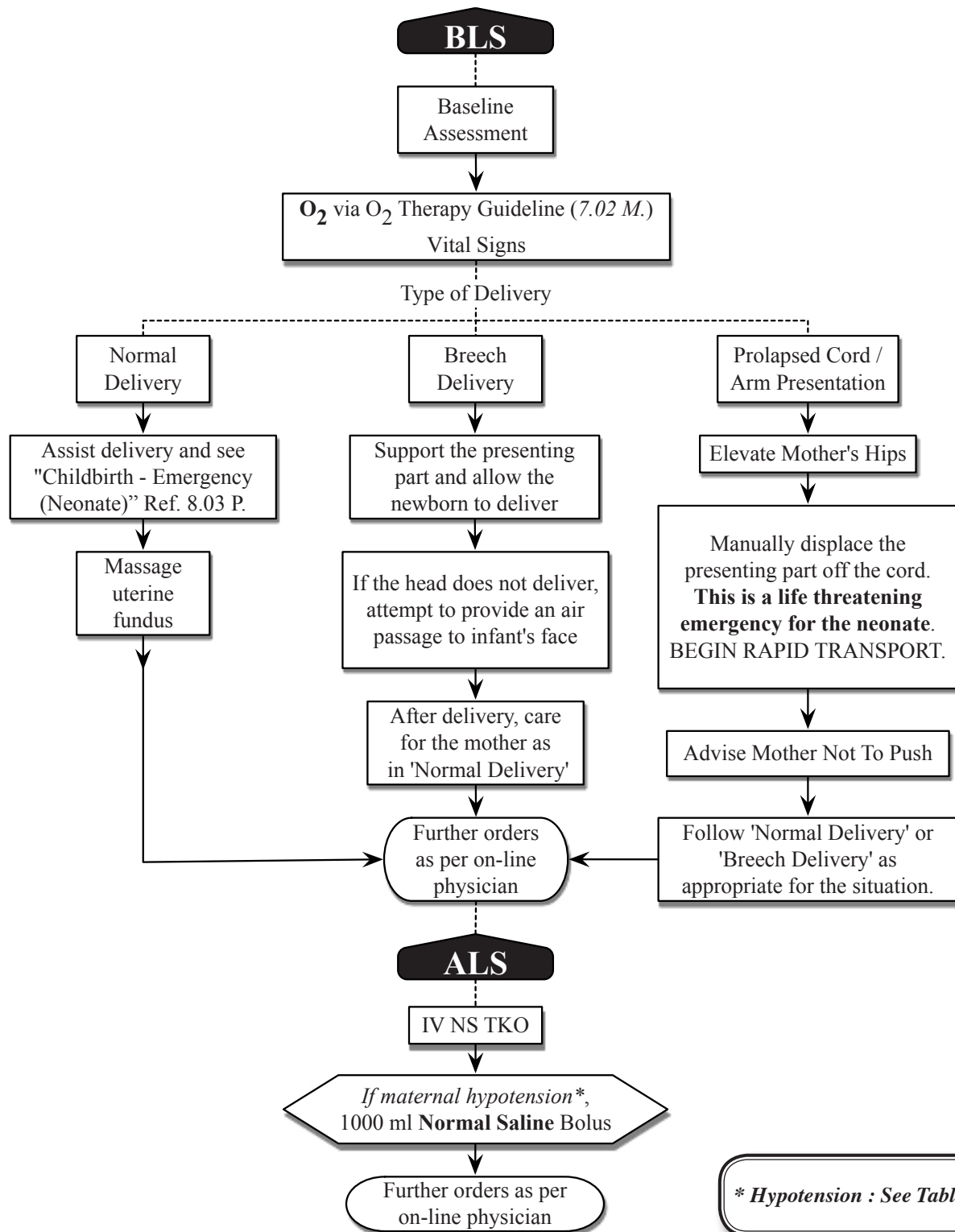


### 8.03 O. Childbirth - Emergency (Mother)



**\* Hypotension : See Table 8-2**

- At no time should venous access take precedence over controlled delivery, airway management or emergency transport!  
 - In the setting of a miscarriage, place all products of conception in a red biohazard bag and transport with the patient to the Emergency Department.  
 - If the placenta has already been delivered, bring the placenta to the Emergency Department with the patient.