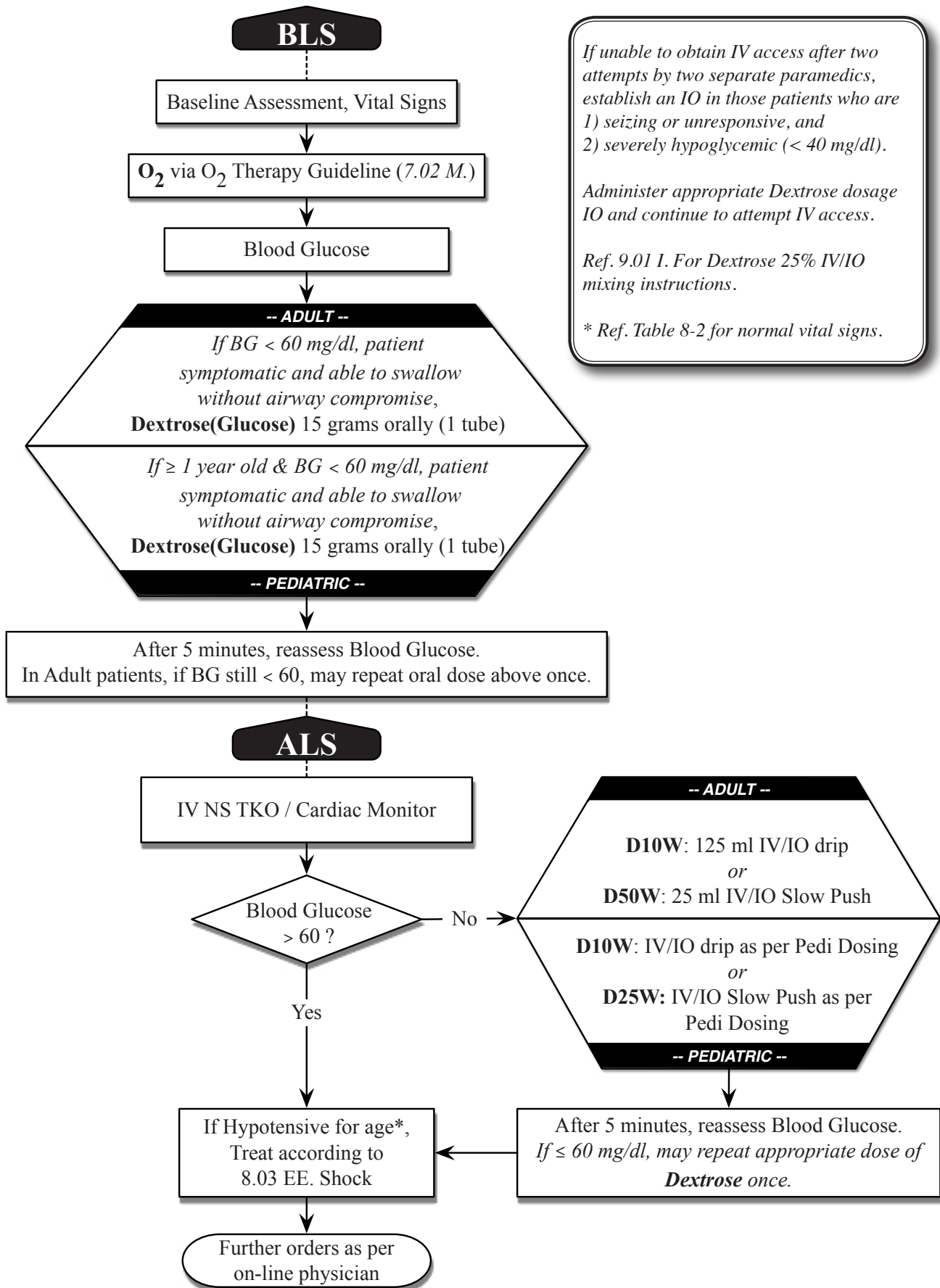


8.03 Y. Hypoglycemia



If unable to obtain IV access after two attempts by two separate paramedics, establish an IO in those patients who are 1) seizing or unresponsive, and 2) severely hypoglycemic (< 40 mg/dl).

Administer appropriate Dextrose dosage IO and continue to attempt IV access.

Ref. 9.01 I. For Dextrose 25% IV/IO mixing instructions.

* Ref. Table 8-2 for normal vital signs.