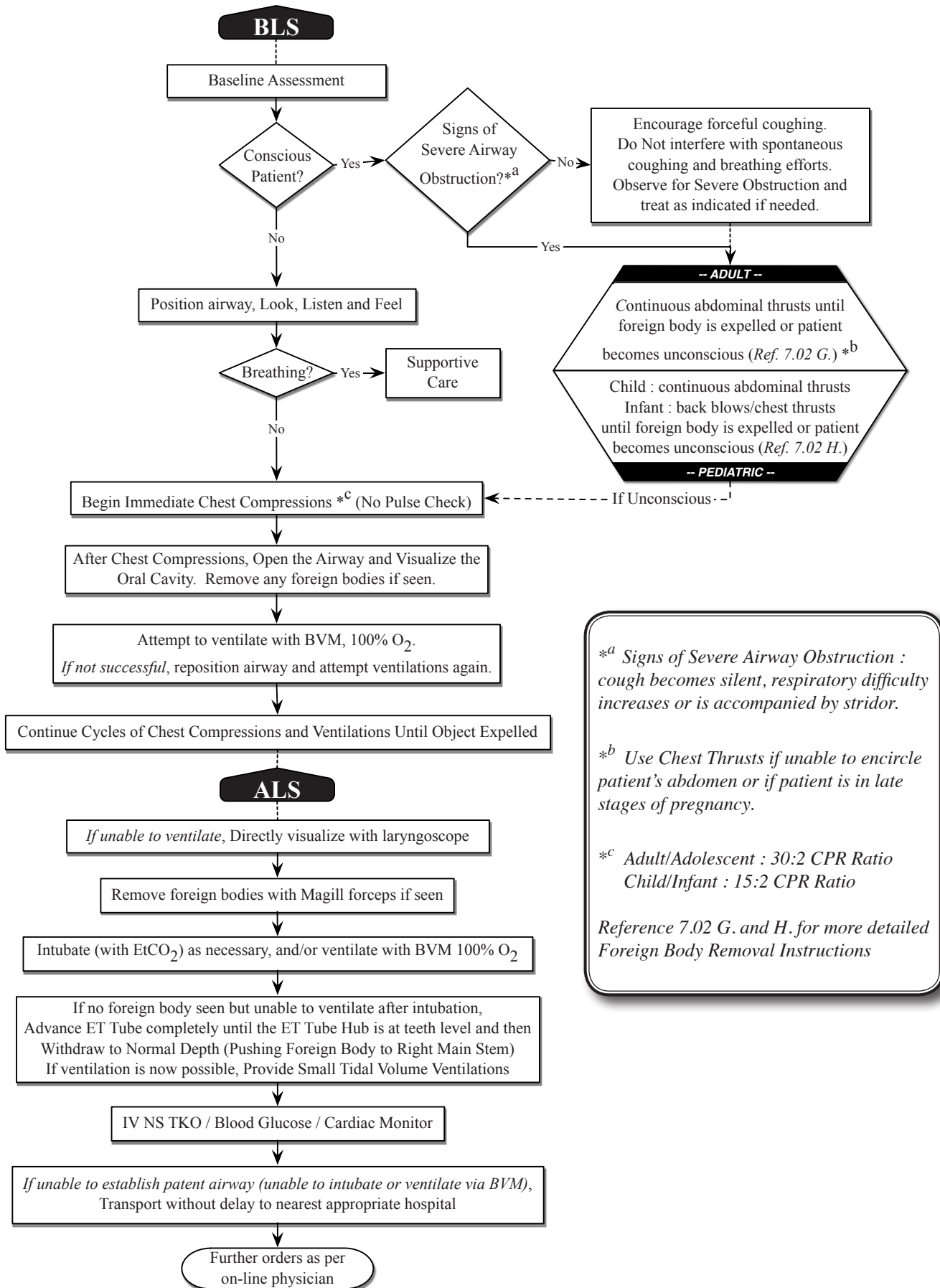


## 8.03 C. Airway Obstruction (Foreign Body)



*\*<sup>a</sup> Signs of Severe Airway Obstruction : cough becomes silent, respiratory difficulty increases or is accompanied by stridor.*

*\*<sup>b</sup> Use Chest Thrusts if unable to encircle patient's abdomen or if patient is in late stages of pregnancy.*

*\*<sup>c</sup> Adult/Adolescent : 30:2 CPR Ratio  
Child/Infant : 15:2 CPR Ratio*

*Reference 7.02 G. and H. for more detailed Foreign Body Removal Instructions*