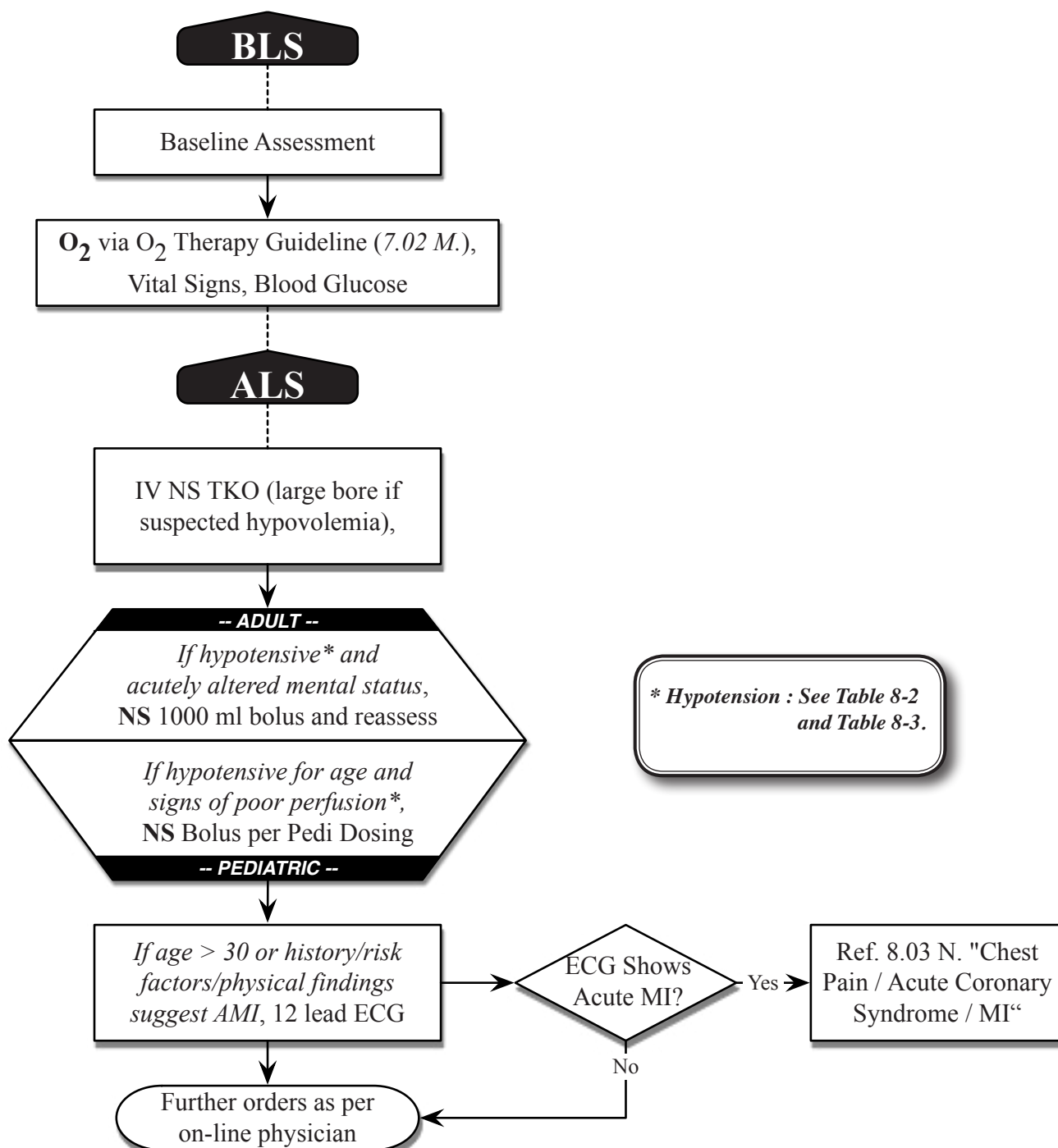


8.03 B. Abdominal Pain / Acute Abdomen



Baseline Assessment Considerations

- Rule-out trauma.
- Past history/illnesses.
- Consider pregnancy (ectopic/intrauterine) in women of child bearing age.
- Elderly patients may have abdominal pain due to symptoms of a serious disease such as ischemic bowel or aortic dissection/rupture.
- Inferior wall MI's frequently present with abdominal pain (especially elderly or female patients).
- Abdominal Aortic Aneurysm, history of aneurysm or GI Bleed.

Life threatening causes of abdominal pain most often require surgical intervention and should be treated in the field by rapid assessment and transport to the most appropriate facility.