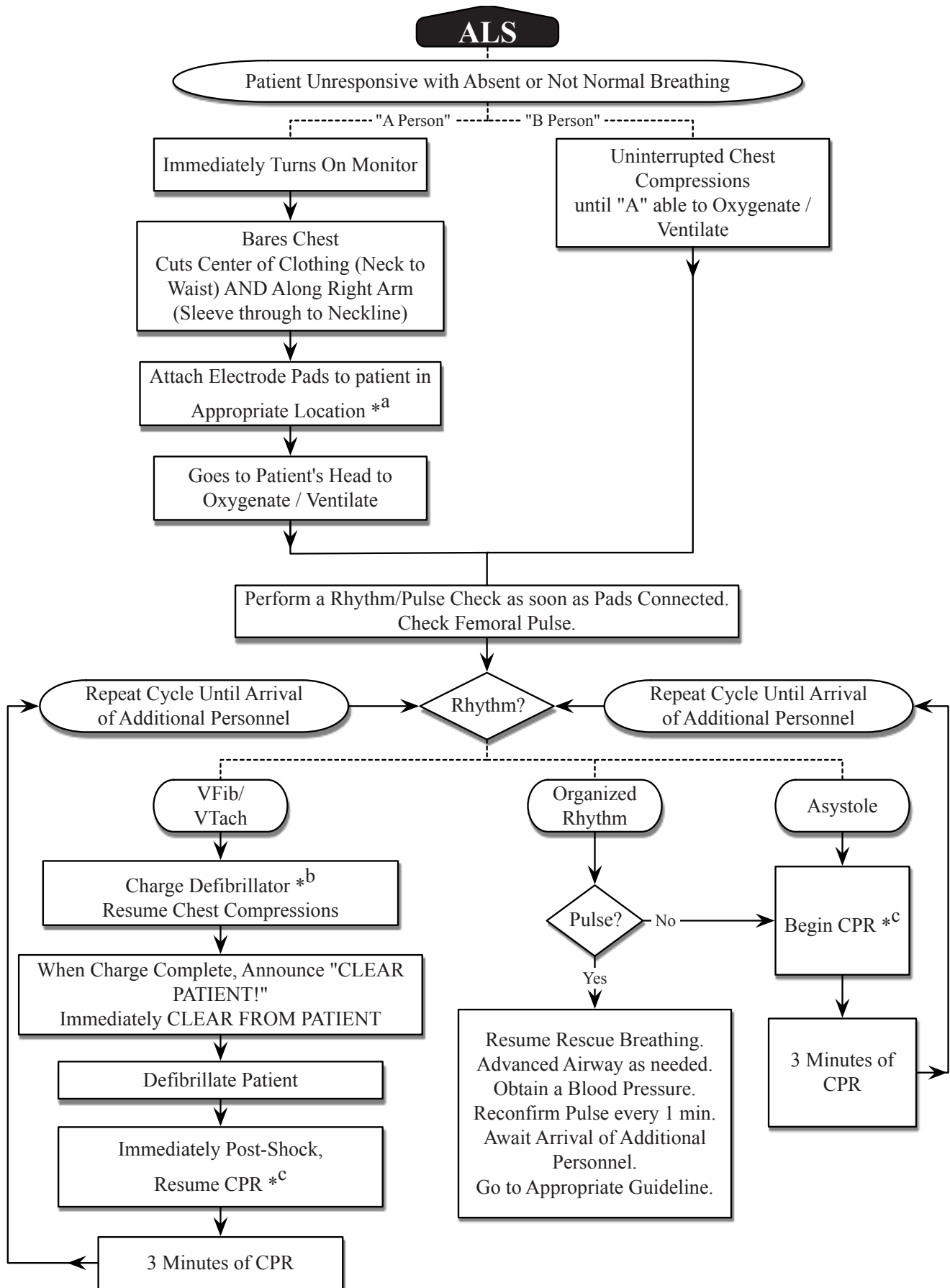


8.02 D. Pulseless Patient - ALS First On Scene



8.02 D. Pulseless Patient - ALS First On Scene : Notes

*^a Refer to 7.04 A.4.d.

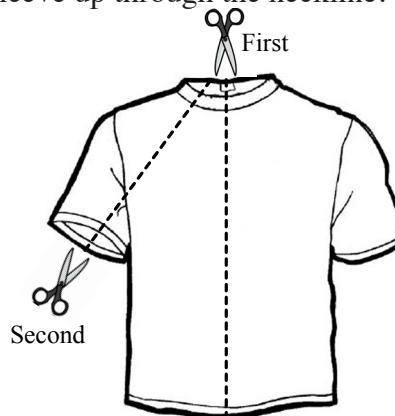
*^b **Defibrillation Joule Settings**

- Adult: 360 Joules each defibrillation
- Pediatric: per Pediatric Dosing Guidelines

*^c Refer to 7.05 *Cardiopulmonary Resuscitation* for proper CPR guideline.

**Once an advanced airway is placed (Supraglottic Airway or ET Tube), begin continuous chest compressions with a ventilation rate appropriate for the patient's age (*Ref. Table 8-2*). Ventilate on the up-stroke of the chest compression.

- A. To remove the patient's upper clothing, the "A Person" cuts the shirt midline from the neck to the waist and then along the patient's right sleeve up through the neckline.



- B. During the second (or subsequent) three minute cycle of CPR, alternate individuals responsible for chest compressions if possible.
- C. Airway Management [ALS]
- Adults: BVM then supraglottic airway (if available). ET Tube as per 8.02 A.1.d.
 - Pediatrics: BVM then supraglottic airway (if available). ET Tube ONLY if unable to ventilate.
- D. If a unit arrives with more than 2 personnel, the following shall apply:
1. Medic/Squad with student: The student shall assist "A Person" by cutting the patient's clothing along the right arm then proceed to switch in and out with the "B Person" for chest compressions.
 2. The student shall then work to establish an IV or IO or be ready to assist with chest compressions.