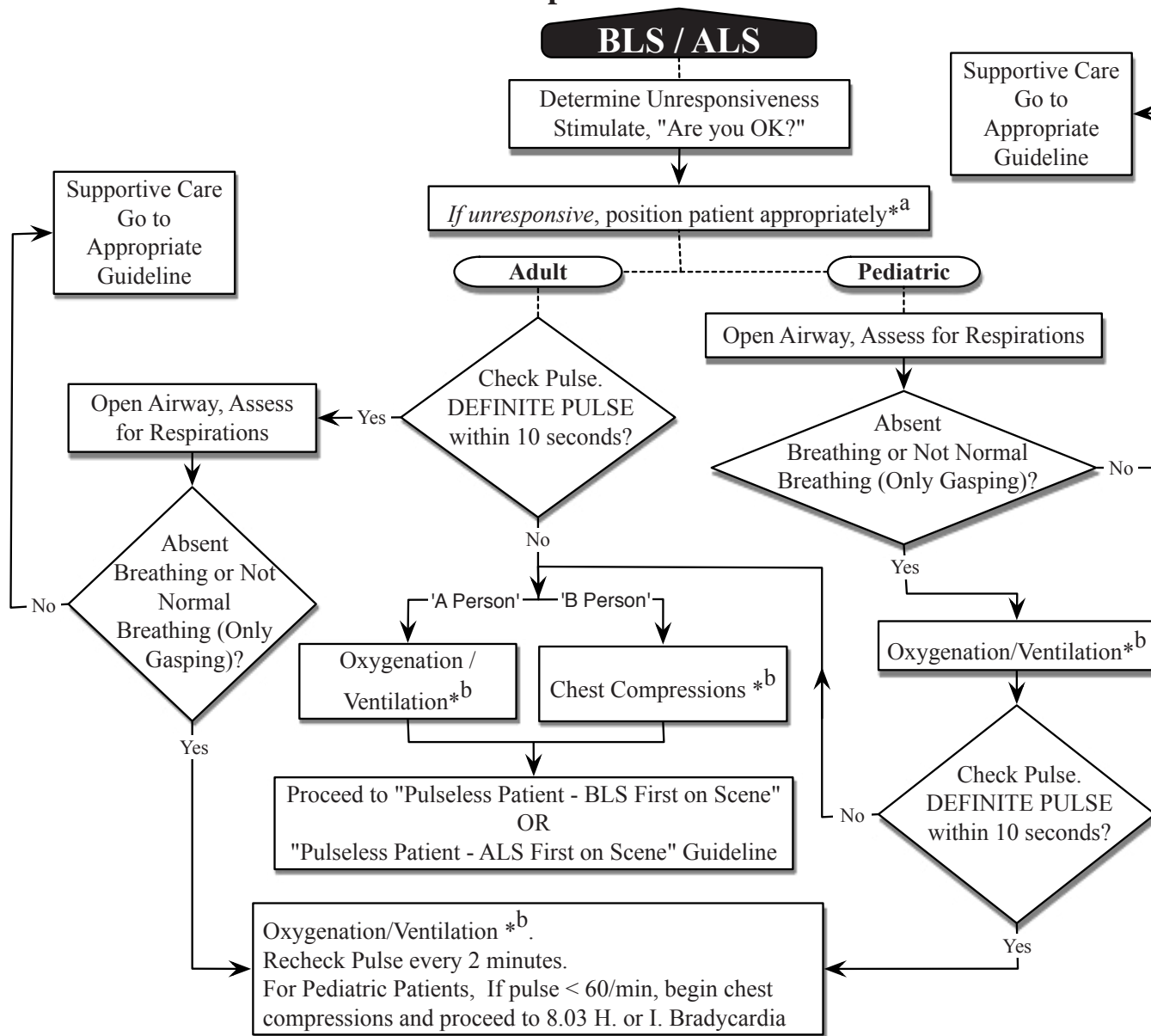


8.02 B. Unresponsive Patient



**^a Patient should be placed on a hard surface (floor/backboard) in a supine position. There should be enough room around the patient to allow adequate access to the patient for CPR and advanced medical therapies. It may be advisable to briefly move a patient prior to resuscitation to allow for maximal chest compressions and patient access. Assess the patient for trauma (log roll as necessary) to determine if traumatic or medical arrest.*

**^b See Table 7-9: CPR Parameters for proper chest compression and ventilation rates.*

- A. This is the **initial guideline** to follow when presented with an unconscious patient.
- B. If CPR has been started, proceed to the appropriate guideline by determining the level of care provided by the unit on scene (i.e. ALS on scene, proceed to 8.02 D. "Pulseless Patient - ALS" guideline; BLS Engine only on scene, proceed to 8.02 C. "Pulseless Patient - BLS" guideline.)
- C. If a EMS Apparatus Paramedic is on scene with an AED, proceed to the 8.02 C. "Pulseless Patient - BLS" guideline. If the EMS Apparatus Paramedic is utilizing a LifePak 15, proceed to 8.02 D. "Pulseless Patient - ALS" guideline.
- D. When proceeding to either of the Pulseless Patient guidelines, notify OEC (and responding units) via the assigned tac channel of an adult or pediatric patient with "CPR in progress."