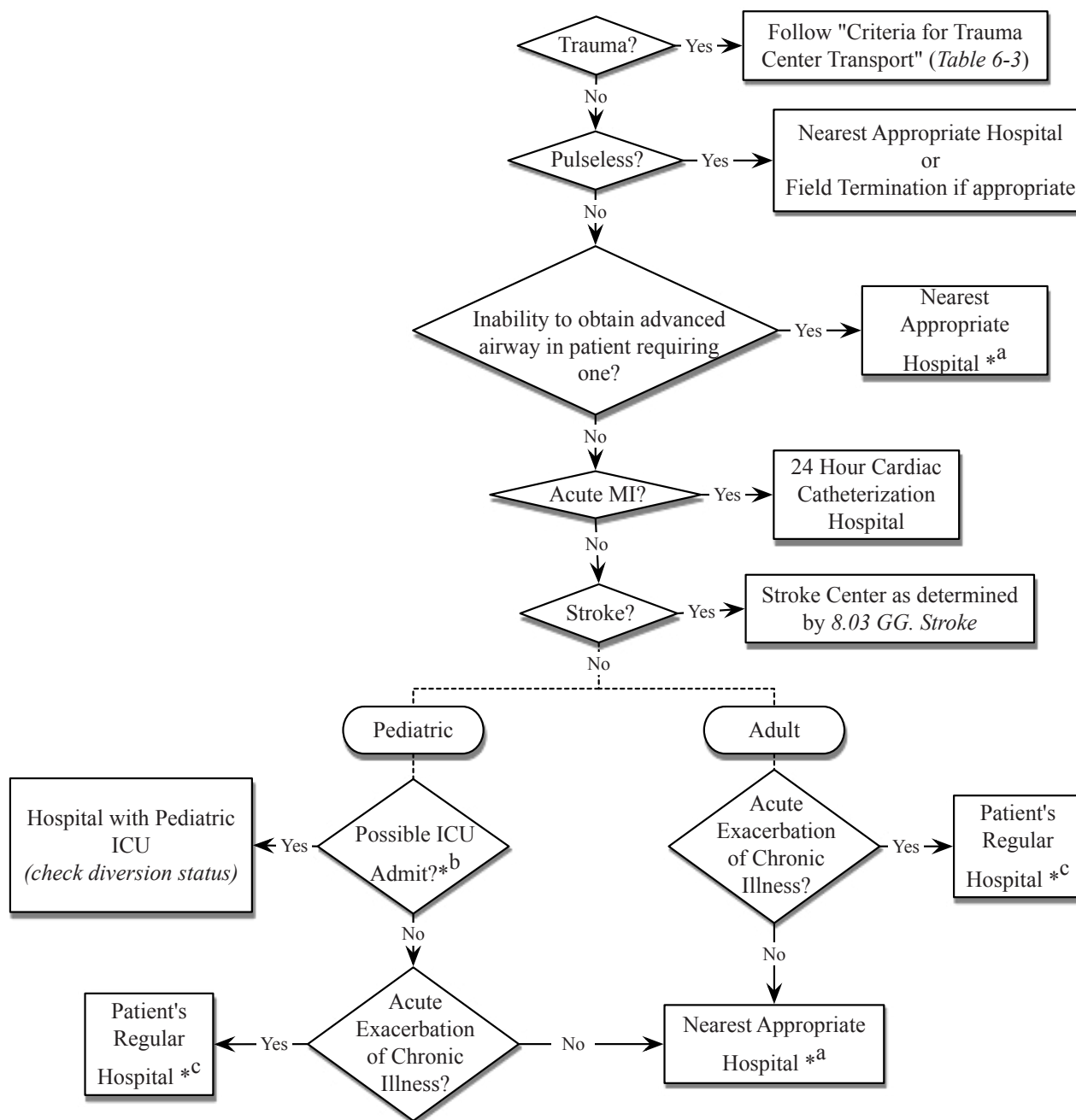


Table 6-2 : Hospital Destination Decision



**^a - Nearest general care hospital not on diversion which is capable of taking care of the patient's problem. If transport time is greater than 20 minutes, contact Base Station for recommendation.*

-Patients who are INMATES in a Harris County Jail Facility are treated, by contract, at a Harris Health Facility (Ben Taub or LBJ). INMATE patients shall be transported to one of these facilities unless they need a specialized level of care which is not provided at one of these facilities. Confirm with personnel at the Jail as to which facility has already been contacted or is preferred.

-VA Benefit Recipients are most appropriately treated by the Veteran's Administration Hospital. These patients shall be transported to this facility unless they need a specialized level of care which is not provided there.

**^b - i.e. serious illness, pulses post-cardiac arrest, etc.*

**^c - A patient suffering from an acute exacerbation of a chronic illness may go to the hospital or hospital system which regularly evaluates and treats their illness despite that hospital being on diversion.*