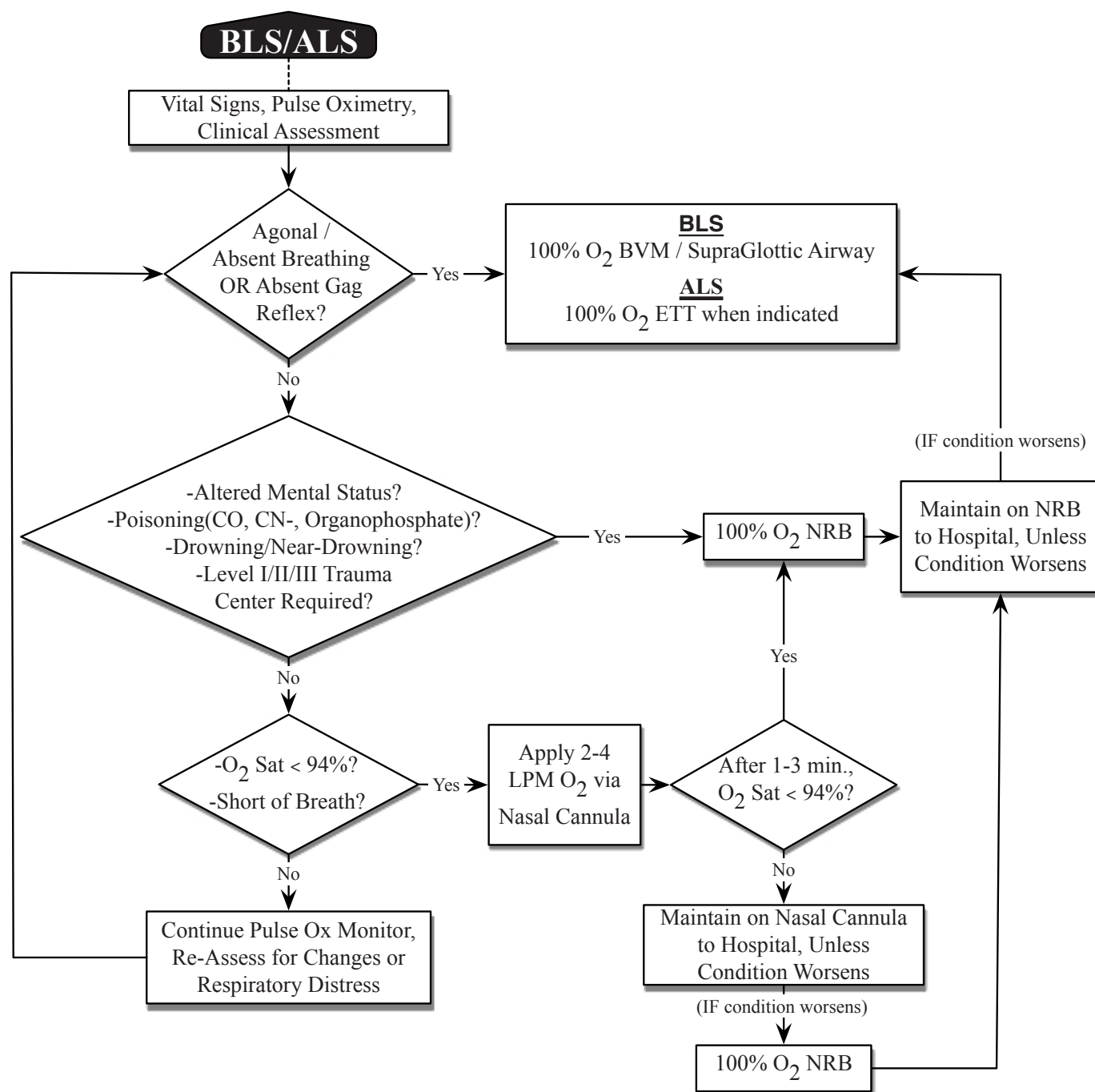


Table 7-8 : Oxygen Therapy Guideline



N. Tracheostomy Care [BLS/ALS]

1. Obstructed tracheostomy

- a. If a mucous plug is suspected, select an appropriately sized suction catheter.
- b. Insert 1 – 2 ml of normal saline in tracheostomy.
- c. Insert suction catheter into tracheostomy and suction as you are withdrawing the catheter.
- d. If obstruction does not clear, remove tracheostomy tube.
- e. If patient is not in respiratory distress after tracheostomy tube is removed, provide O₂ via guideline and initiate transport to the hospital.
- f. If patient is in respiratory distress after tracheostomy is removed, insert a bougie into the stoma and attempt to reinsert a new tracheostomy tube over the bougie. Note: for tracheostomy tubes size 5.5 or smaller, do not use a bougie as the tube will not fit over the