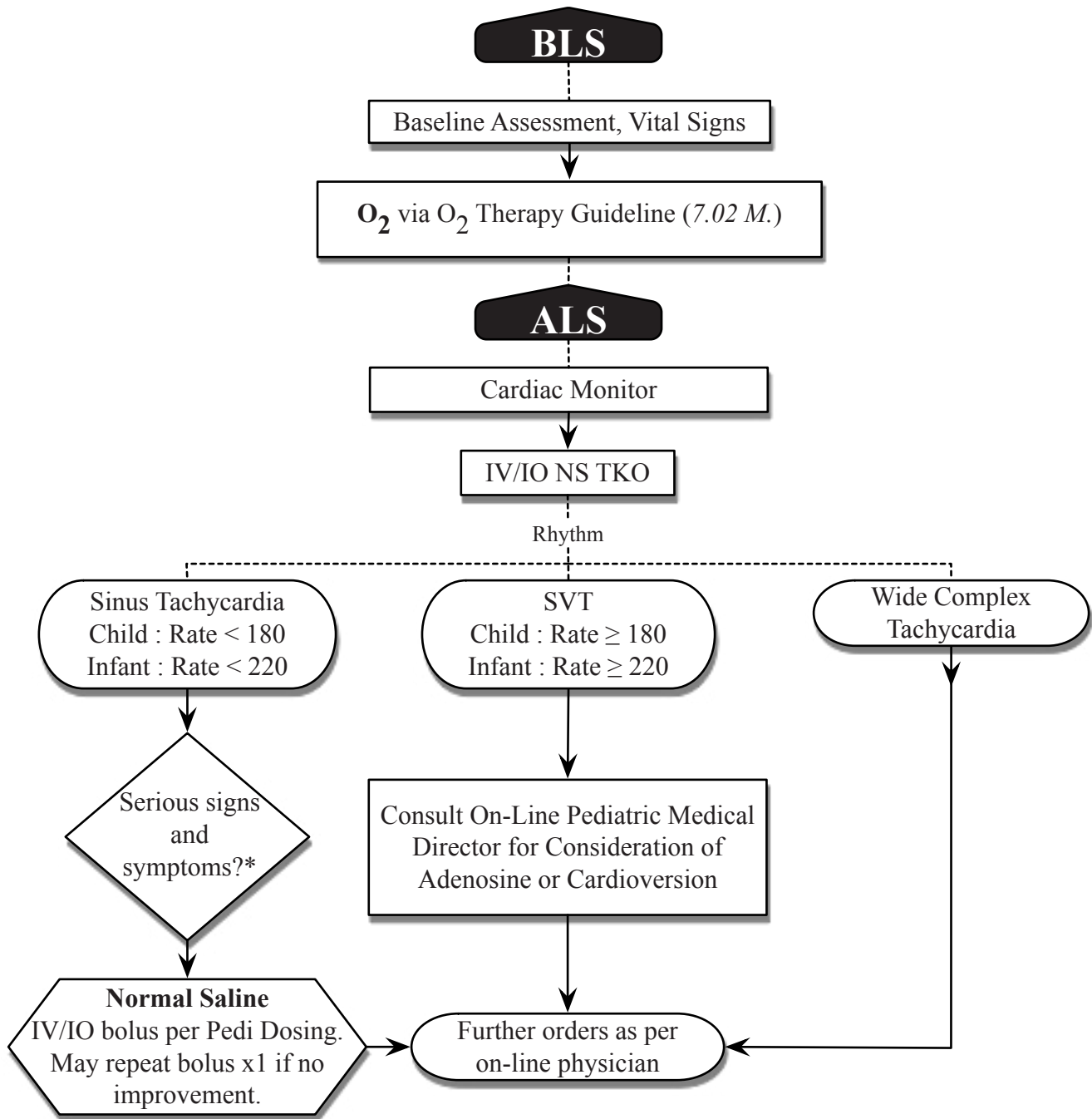


8.03 JJ. Tachycardia (Symptomatic) - PEDIATRIC ONLY



* *Serious Signs / Symptoms include:*

- Unresponsiveness
- Hypotension
- Poor perfusion (capillary refill > 3 sec.)
- Respiratory Distress

Therapies ONLY upon approval by MD On-Call

Adenosine - Rapid IVP per Pedi Dosing within 1-3 sec, followed by rapid flush of 10cc Normal Saline. Second Dose of Adenosine is doubled in the Pedi Dosing Guidelines.

Sync Cardioversion as per Pedi Dosing Guidelines and directed by MD On-Call.