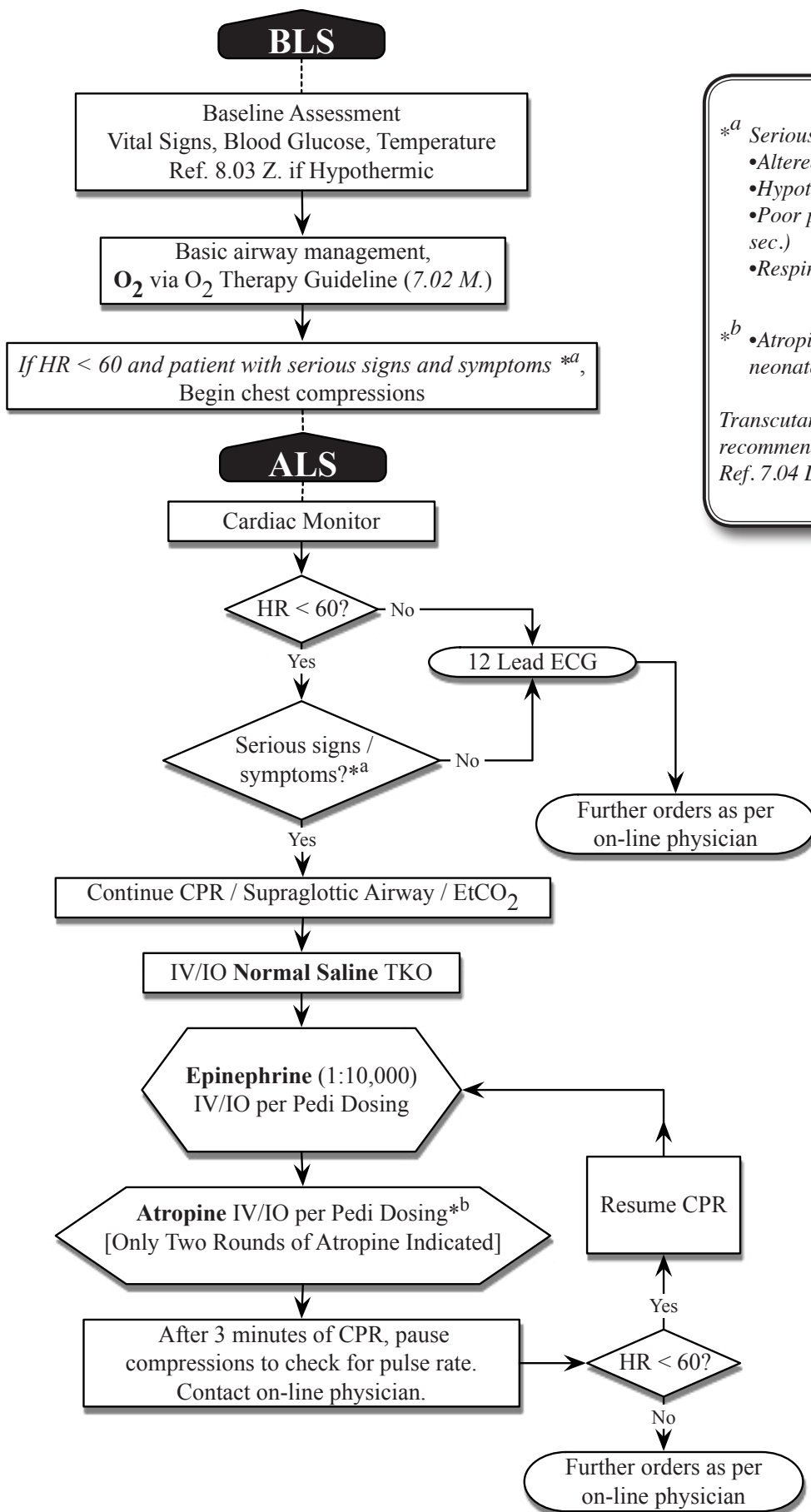


### 8.03 I. Bradycardia (Symptomatic) - PEDIATRIC ONLY



*\*<sup>a</sup> Serious Signs / Symptoms include:*

- Altered Mental Status
- Hypotension
- Poor perfusion (capillary refill > 3 sec.)
- Respiratory Distress

*\*<sup>b</sup> Atropine is not to be given to neonates without a physician order.*

*Transcutaneous pacing may be recommended by on-line medical control, Ref. 7.04 D.*