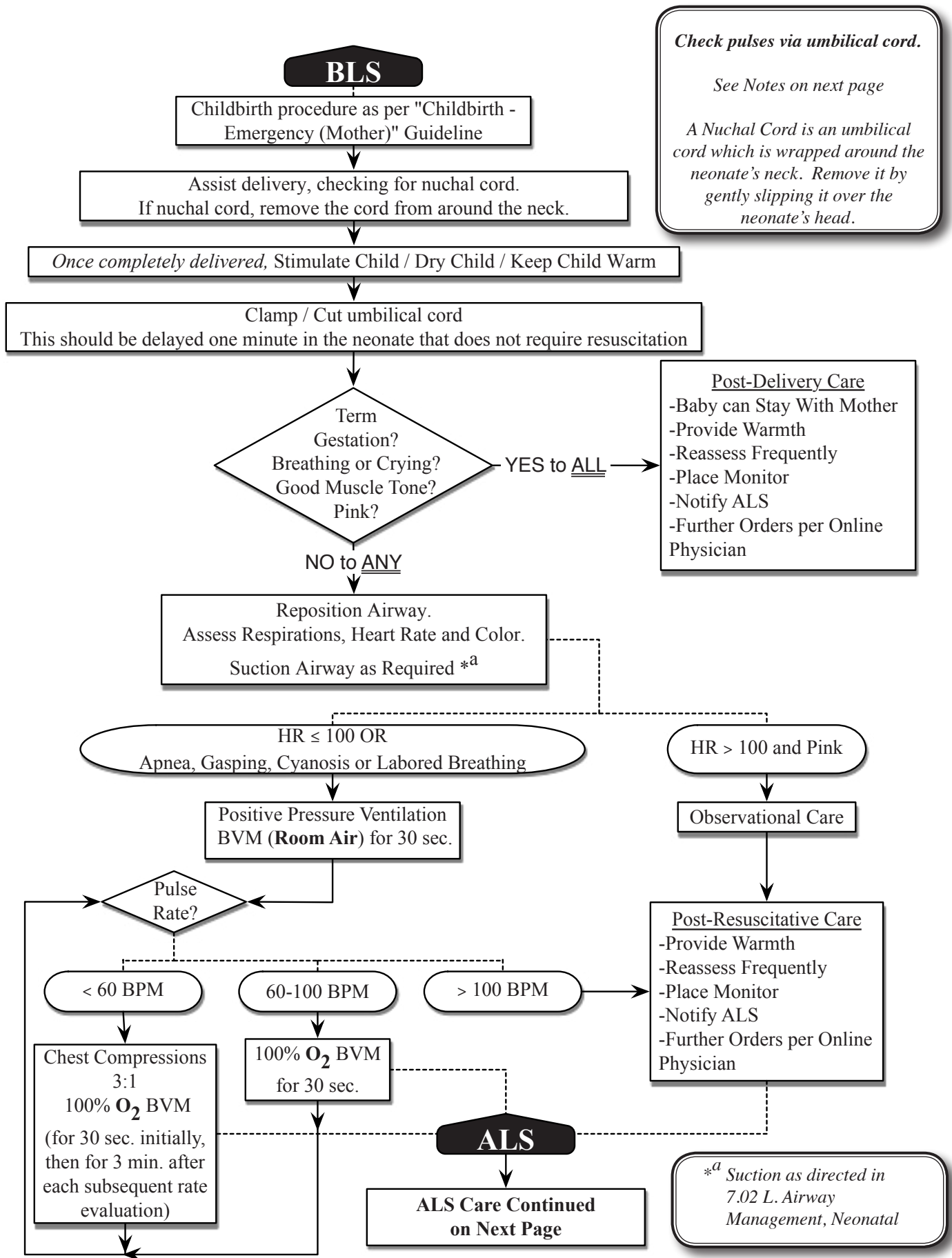
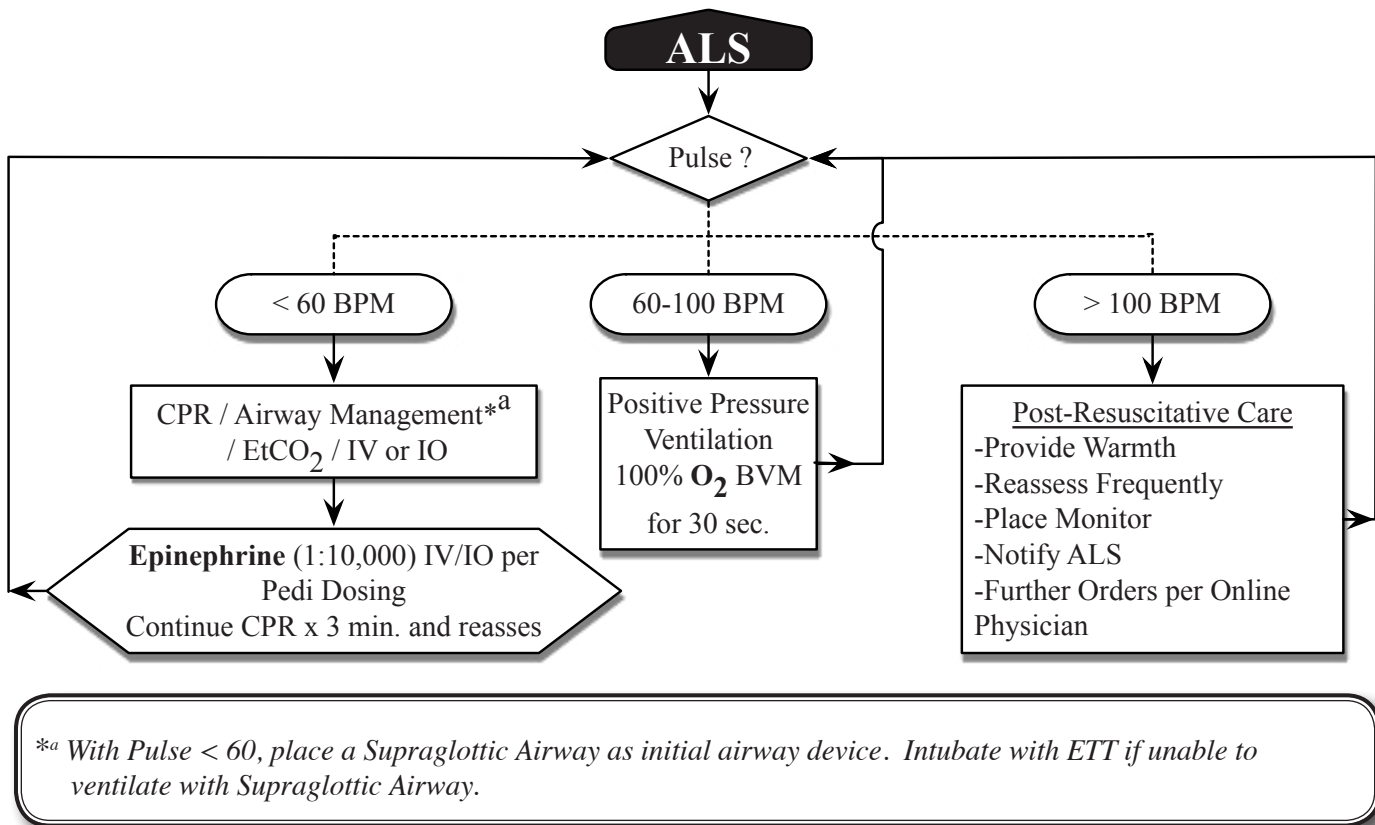


### 8.03 P. Childbirth - Emergency (Neonate / "Newly Born") - PEDIATRIC ONLY



### 8.03 P. Childbirth - Emergency (Newborn) NOTES



#### A. Emergency Childbirth Procedure

1. Assist delivery, checking for umbilical cord wrapped around the neck. If the cord is wrapped around the neck, gently remove the cord.
2. When the child’s head is delivered, clear the airway with bulb suction (*Reference 7.02 L. Neonatal / “Newborn” Airway Management*).
3. Once completely delivered, stimulate the child by vigorously drying child with a towel.
4. Wrap the child in a thermal blanket or dry towel. Place on his/her back and keep the child warm.
5. After the child is completely delivered, clamp and cut the cord 2-3 inches from infant’s abdomen.

- B. Notify the Base Station of a neonatal arrest situation as early as possible in order to ensure the availability of a physician to provide on-line medical control.

Table 8-4 : APGAR Score

Sign	0	1	2	Score @ 1 Min.	Score @ 5 Min.
<b>Appearance (Skin Color)</b>	Blue, Pale	Body Pink, Extremities Blue	Completely Pink		
<b>Pulse Rate (Heart Rate)</b>	Absent	Below 100	Above 100		
<b>Grimace (Irritability)</b>	No Response	Grimaces	Cries		
<b>Activity (Muscle Tone)</b>	Limp	Some Flexion of Extremities	Active Motion		
<b>Respiratory (Effort)</b>	Absent	Slow and Irregular	Strong Cry		
			Total Score :		